

# LABOR MARKET OVERVIEW

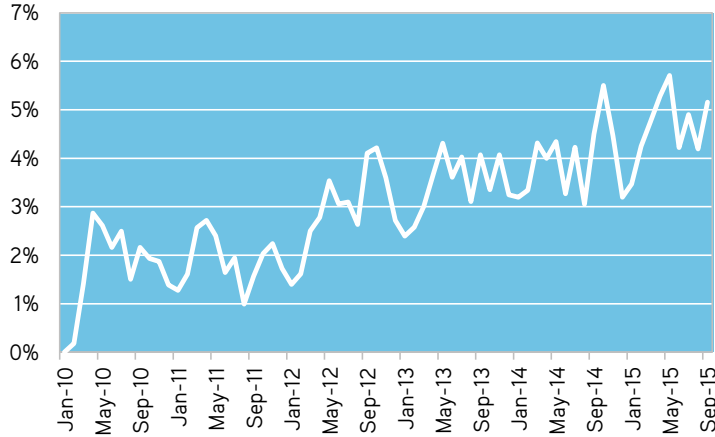


Western Piedmont Workforce Development Board

November 2015

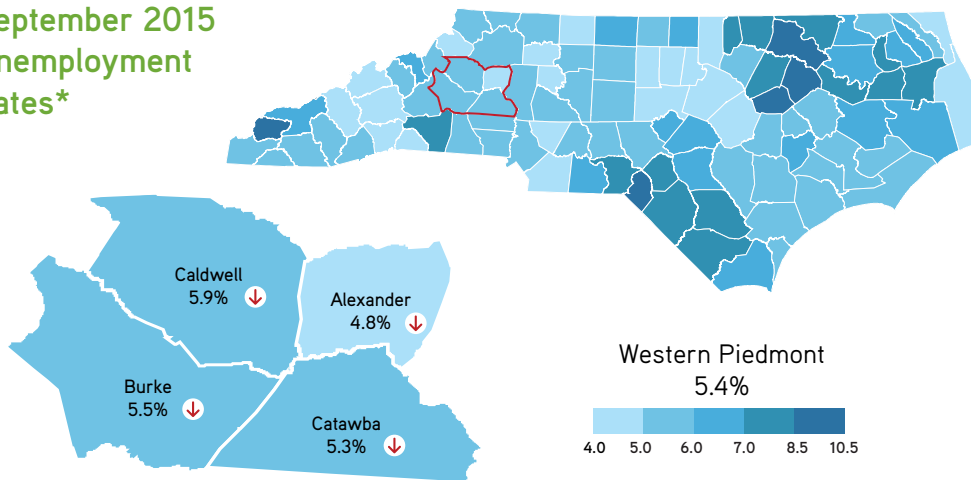
## Regional Labor Market Snapshot

5-Year  
Percent Change  
in Employment\*



Western  
Piedmont  
Region

September 2015  
Unemployment  
Rates\*



## Community Investment Report Top Announced Projects 2nd Quarter 2015

County	Company	Announced Jobs
Catawba	Blue Bloodhound, LP	191
Catawba	Wal-Mart Neighborhood Market	95
Catawba	Chick-fil-A	85
Burke	Duralee Fine Furniture	41
Catawba	Fourk Restaurant	40
Catawba	Carolina Nonwovens	35
Caldwell	Sealed Air Corporation	20
Caldwell	CentriLogic	18
Catawba	K & M Collision	10

Note: All data produced in this publication are generated by LEAD unless otherwise stated.

\*September 2015 data are preliminary, while other 2015 data are revised. All other reported data have undergone annual revision.

## Trending

### UNEMPLOYMENT\*

September 2015

Western Total = 9,051



**Western Piedmont 5.4%**



**North Carolina 5.4%**



**United States 4.9%**

### REGIONAL EMPLOYMENT\*

Western Total = 157,572

**1,443 More People Working**  
in September than previous month

**384 More People Working**  
than same period one year ago

### CLAIMS-TAKING ACTIVITY

Initial Claims Total = 536

**2% Increase in Claims**  
in September over previous month

Benefits Paid Total = \$544,270

**18% Decrease in Claims**  
in September over previous month

**Duration of Claims Down 3% to 11.1**  
in September over previous month

### INDIVIDUALS RECEIVING BENEFITS

Western Total = 660

**14% Decrease in Claimants**  
in September over previous month

### AVAILABLE JOBS

**7,752 Jobs Posted Online**  
over past 90 days

**450 More Job Openings**  
than same period one year ago

Source: The Conference Board Help Wanted Online

Western Piedmont Workforce Development Board | 828.322.9191

NC Department of Commerce | Labor & Economic Analysis Division | 919.707.1500 | lead@nccommerce.com



# LABOR MARKET OVERVIEW

Western Piedmont Workforce Development Board

## Civilian Labor Force Estimates\*

		September 2015	August 2015	July 2015	September 2014
<b>Alexander</b>	Labor Force	17,194	17,129	17,362	17,125
	Employed	16,371	16,212	16,393	16,251
	Unemployed	823	917	969	874
	Rate	4.8	5.4	5.6	5.1
<b>Burke</b>	Labor Force	39,488	39,387	39,776	39,352
	Employed	37,316	36,974	37,281	37,060
	Unemployed	2,172	2,413	2,495	2,292
	Rate	5.5	6.1	6.3	5.8
<b>Caldwell</b>	Labor Force	35,436	35,394	35,735	35,448
	Employed	33,357	33,054	33,293	33,137
	Unemployed	2,079	2,340	2,442	2,311
	Rate	5.9	6.6	6.8	6.5
<b>Catawba</b>	Labor Force	74,505	74,368	74,873	74,422
	Employed	70,528	69,889	70,221	70,143
	Unemployed	3,977	4,479	4,652	4,279
	Rate	5.3	6.0	6.2	5.7

\*September 2015 data are preliminary, while other 2015 data are revised. All other reported data have undergone annual revision.

## Initial Claims

	September 2015	September 2014
Alexander	44	52
Burke	116	173
Caldwell	131	237
Catawba	245	314

## Duration of Benefits

	September 2015	September 2014
Alexander	10.2	13.9
Burke	11.3	15.2
Caldwell	10.7	14.9
Catawba	11.3	15.1

## Individuals Receiving Benefits

	September 2015	September 2014
Alexander	57	105
Burke	140	265
Caldwell	123	338
Catawba	340	586

Note: All data produced in this publication are generated by LEAD unless otherwise stated.