

Demographics

Certified Population, July 2006	30,354	70
Population, 2000 Census	29,334	70
Population, 1990 Census	25,520	67
Percent population change, 1990-2000	14.9	57
Percent population change, NC, 1990-2000	21.3	

County Rank



Workforce & Education

Employment, Nov 2007	12,648	71
Unemployed, Nov 2007	505	78
Percent unemployed, Nov 2007	3.8	84
Percent unemployed, 2006	4.3	74
Percent unemployed, NC, Nov 2007	5.1	
Percent unemployed, NC, 2006	4.8	
Percent high school graduates or higher, 2000	82.5	12
Percent high school graduates or higher, NC, 2000	78.1	
Average SAT score (2400 scale), 2007	1,513	18
Average SAT score (2400 scale), NC, 2007	1,486	
Percent bachelor's degree or higher, 2000	23.7	17
Percent bachelor's degree or higher, NC, 2000	22.5	

Taxes, Sales & Services

Property taxes/\$100 Value ('07-'08)	\$0.5400
Taxable sales (Mil \$, Sept 07)	\$28.7
Taxable sales (Mil \$, FY 06-07)	\$279.8
Pharmacist/10,000 Pop, 2006	7
Physician/10,000 Pop, 2006	15
RN/10,000 Pop, 2006	74
Dentist/10,000 Pop, 2006	3
Tier designation, 2008	2
Partnership Region	Advantage West
Licensed Child Care Facilities, Sept 07	15
Child Care Slots, Sept 07	774

Income, Housing & Poverty

Average weekly wage per employee, 2nd Quarter 2007	\$536	65
Median household income, 2005	\$39,480	30
Per capita personal income, 2000	\$26,238	20
Per capita personal income, 2005	\$28,487	28
Per capita personal income, NC, 2006	\$32,234	
Median value of owner-occupied housing units, 2000	\$104,022	15
Median value of owner-occupied housing units, NC, 2000	\$108,300	
Percent in poverty, 2005	13.0	77
Percent in poverty, NC, 2005	14.9	

Notes: Data are the latest available at the date the profile was prepared. Demographics are from U.S. Census. Workforce & Education are from NC Employment Security Commission, U.S. Census, and NC Dept. of Public Instruction respectively; county unemployment rates are seasonally unadjusted. Average wage are from ESC's "Insured Employment and Wages in NC for Private Industry by Sector (2 digit)" which is based on the Current Population Survey." Income, Housing & Poverty are from U.S. Bureau of Economic Analysis and the U.S. Census, respectively. Jobs and Investments are from NC Dept. of Commerce. Closings & Layoffs by effective date are from the NC Employment Security Commission. Employment & Wages are from NCESC's "Insured Employment and Wages in NC for Industry by Sector (2 digit)" series; missing data or * indicates data not available or suppressed for confidentiality reasons. Taxes are from the NC Dept. of Revenue and prior to 7/05 represent gross sales but after are taxable sales. Medical data from the Cecil G. Sheps Center for Health Services Research, UNC-Chapel Hill. **County Ranking 1=highest.

Announced Jobs & Investments

Jobs announced, 2006	0
Jobs announced, Thru Oct 12, 2007	0
Total investment announced, 2006	\$0
Total investment announced, Thru Oct 12, 2007	\$0

Announced Closings & Layoffs

Number of affected establishments, 2006	0
Number of affected establishments, Thru Dec 2007	0
Job losses, 2006	0
Job losses, Thru Dec 2007	0

Employment and Wages, by Sector (2nd Quarter 2007)

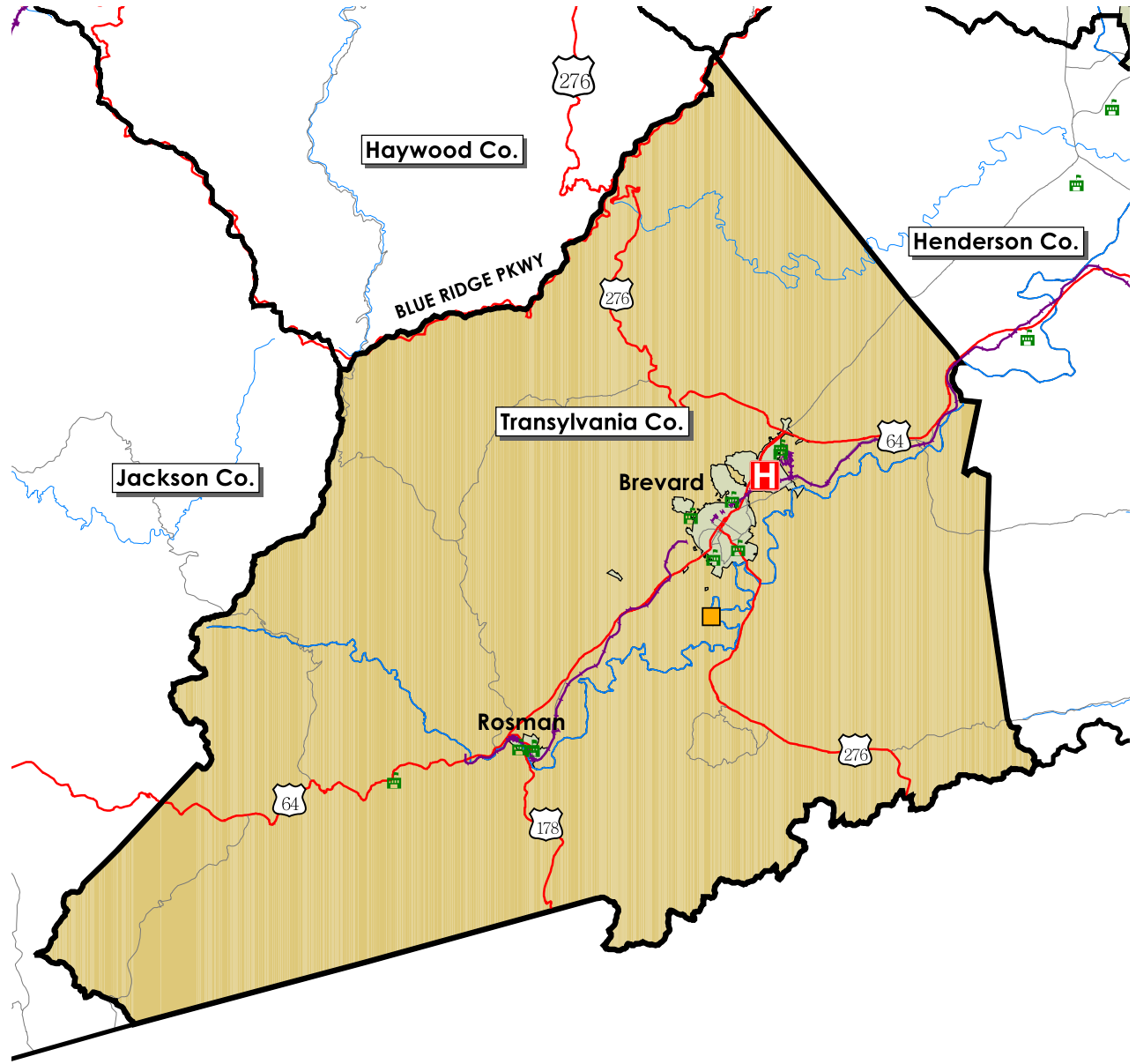
	Transylvania			North Carolina		
	Avg Emp	% Total	Avg Wkly Wage	Avg Emp	% Total	Avg Wkly Wage
Total All Industries	9,551	100.0	\$536	4,070,849	100.0	\$718
Total Government	1,432	15.0	\$673	678,349	16.7	\$754
Total Private Industry	8,119	85.0	\$512	3,392,501	83.3	\$711
Agriculture Forestry Fishing & Hunting	19	0.2	\$487	30,294	0.7	\$517
Mining	0	0.0	\$0	4,055	0.1	\$1,176
Utilities	0	0.0	\$0	13,939	0.3	\$1,378
Construction	846	8.9	\$601	255,709	6.0	\$729
Manufacturing	465	4.9	\$729	537,281	13.2	\$876
Wholesale Trade	350	3.7	\$776	182,823	4.5	\$1,021
Retail Trade	1,532	16.0	\$374	462,301	11.4	\$468
Transportation and Warehousing	121	1.3	\$683	115,772	2.8	\$721
Information	125	1.3	\$795	72,926	1.8	\$1,025
Finance and Insurance	225	2.4	\$725	152,965	3.8	\$1,183
Real Estate and Rental and Leasing	111	1.2	\$675	54,786	1.3	\$673
Professional and Technical Services	249	2.6	\$546	182,439	4.5	\$1,082
Management of Companies and Enterprises	0	0.0	\$0	69,658	1.7	\$1,374
Administrative and Waste Services	354	3.7	\$608	243,995	6.0	\$505
Educational Services	269	2.8	\$649	57,097	1.4	\$711
Health Care and Social Assistance	1,517	15.9	\$565	434,459	10.7	\$688
Arts, Entertainment and Recreation	230	2.4	\$427	53,965	1.3	\$551
Accommodation and Food Services	1,357	14.2	\$285	346,693	8.5	\$260
Other Services Ex. Public Admin	249	2.6	\$452	103,559	2.5	\$475
Public Administration				228,584	5.6	\$765
Unclassified	69	0.7	\$435	17,783	0.4	\$651

Trends Profile Map Transylvania County



- Legend**
-  Public Schools
 -  Airports
 -  Hospitals
 -  Colleges and Universities
 -  Community Colleges
 -  Rail Lines
 -  Interstate highways
 -  US Highways
 -  State and County Highways
 -  Major Rivers and Streams
 -  Major Waterbodies
 -  Municipal Boundaries

0 5 Miles

Map prepared by the North Carolina Department of Commerce,
Division of Policy, Research & Strategic Planning November 2003.

Transylvania County

Employment Characteristics

Reporting Quarter: 4th Quarter 2007

County Profile Contact (919) 715-6374

Commerce Economic Development Contact (919) 733-4977

Employment Security Commission (919) 733-2936

Top Manufacturers (2nd Quarter 2007)

M B INDUSTRIES INC
 VITALIE MANUFACTURING
 SMITH SYSTEMS INC
 RING INDUSTRIAL GROUP LP
 KEIR MANUFACTURING INC
 AGFA HEALTHCARE CORPORATION
 GENIE PRODUCTS ACQUISITION CORP
 ADP TOTALSOURCE II INC
 BRACKEN MOUNTAIN BAKERY
 PISGAH LABS

Employment Range

100-249
 50-99
 Below 50
 Below 50
 Below 50
 Below 50
 Below 50
 Below 50
 Below 50



Top Non-Manufacturing Employers (2nd Quarter 2007)

TRANSYLVANIA COUNTY SCHOOLS
 TRANSYLVANIA COMMUNITY HOSPITAL INC
 TRANSYLVANIA COUNTY
 WAL-MART ASSOCIATES INC
 BREVARD COLLEGE CORP
 INGLES MARKETS INC
 TOWN OF BREVARD
 IVY HILL HEALTH & RETIREMENT
 BRIAN CTR HEALTH & RETIREMENT
 LOWES HOME CENTERS INC

Employment Range

500-999
 250-499
 250-499
 250-499
 100-249
 100-249
 100-249
 100-249
 100-249
 100-249

Industry

Education and Health Services
 Education and Health Services
 Public Administration
 Trade, Transportation, and Utilities
 Education and Health Services
 Trade, Transportation, and Utilities
 Public Administration
 Education and Health Services
 Education and Health Services
 Trade, Transportation, and Utilities