

# Transylvania County

Reporting Quarter: 2nd Quarter 2007

County Profile Contact (919) 715-6374  
Economic Development Contact (919) 733-4977

## Demographics

Population, July 2006	30,354	70
Population, 2000 Census	29,334	70
Population, 1990 Census	25,520	67
Percent population change, 1990-2000	14.9	57
Percent population change, NC, 1990-2000	21.3	

## County Rank



## Workforce & Education

Employment, June 2007	12,527	70
Unemployed, June 2007	557	80
Percent unemployed, June 2007	4.3	79
Percent unemployed, 2006	4.3	74
Percent unemployed, NC, June 2007	5.1	
Percent unemployed, NC, 2006	4.8	
Percent high school graduates, 2000	82.5	12
Percent high school graduates, NC, 2000	78.1	
Average SAT score, 2006	1,602	2
Average SAT score, NC, 2006	1,493	
Percent bachelor's degree or higher, 2000	23.7	17
Percent bachelor's degree or higher, NC, 2000	22.5	

## Taxes, Sales & Services

Property taxes/\$100 Value ('07-'08)	\$0.5400
Taxable sales (Mil \$, June 07)	\$21.7
Taxable sales (Mil \$, FY 05-06)	\$242.0
Number of physicians, 2005	42
Population/physician ratio, 2005	723
Population/RN ratio, 2005	144
Population/dentist ratio, 2005	2,988
Tier designation, 2007	2
Partnership Region	Advantage West
Licensed Child Care Facilities	15
Child Care Capacity	1,050

## Income, Housing & Poverty

Average weekly wage per employee, 4th Quarter 2006	\$572	56
Median household income, 2004	\$36,934	43
Per capita personal income, 2000	\$26,238	20
Per capita personal income, 2005	\$28,487	28
Per capita personal income, NC, 2006	\$32,234	
Median value of owner-occupied housing units, 2000	\$104,022	15
Median value of owner-occupied housing units, NC, 2000	\$108,300	
Percent in poverty, 2004	12.6	79
Percent in poverty, NC, 2004	13.8	

Notes: Data are the latest available at the date the profile was prepared. Demographics are from U.S. Census. Workforce & Education are from NC Employment Security Commission, U.S. Census, and NC Dept. of Public Instruction respectively; county unemployment rates are seasonally unadjusted. Average wage are from ESC's "Insured Employment and Wages in NC for Private Industry by Sector (2 digit) which is based on the Current Population Survey." Income, Housing & Poverty are from U.S. Bureau of Economic Analysis and the U.S. Census, respectively. Jobs and Investments are from NC Dept. of Commerce. Closings & Layoffs by effective date are from the NC Employment Security Commission. Employment & Wages are from NCESC's "Insured Employment and Wages in NC for Industry by Sector (2 digit)" series; \* indicates data not available or suppressed for confidentiality reasons. Taxes are from the NC Dept. of Revenue and prior to 7/05 represent gross sales but after are taxable sales. Medical data from the Cecil G. Sheps Center for Health Services Research, UNC-Chapel Hill. \*\*County Ranking 1=highest.

## Announced Jobs & Investments

Jobs announced, 2006	0
Jobs announced, Thru June 2007	0
Total investment announced, 2006	\$0
Total investment announced, Thru June 2007	\$0

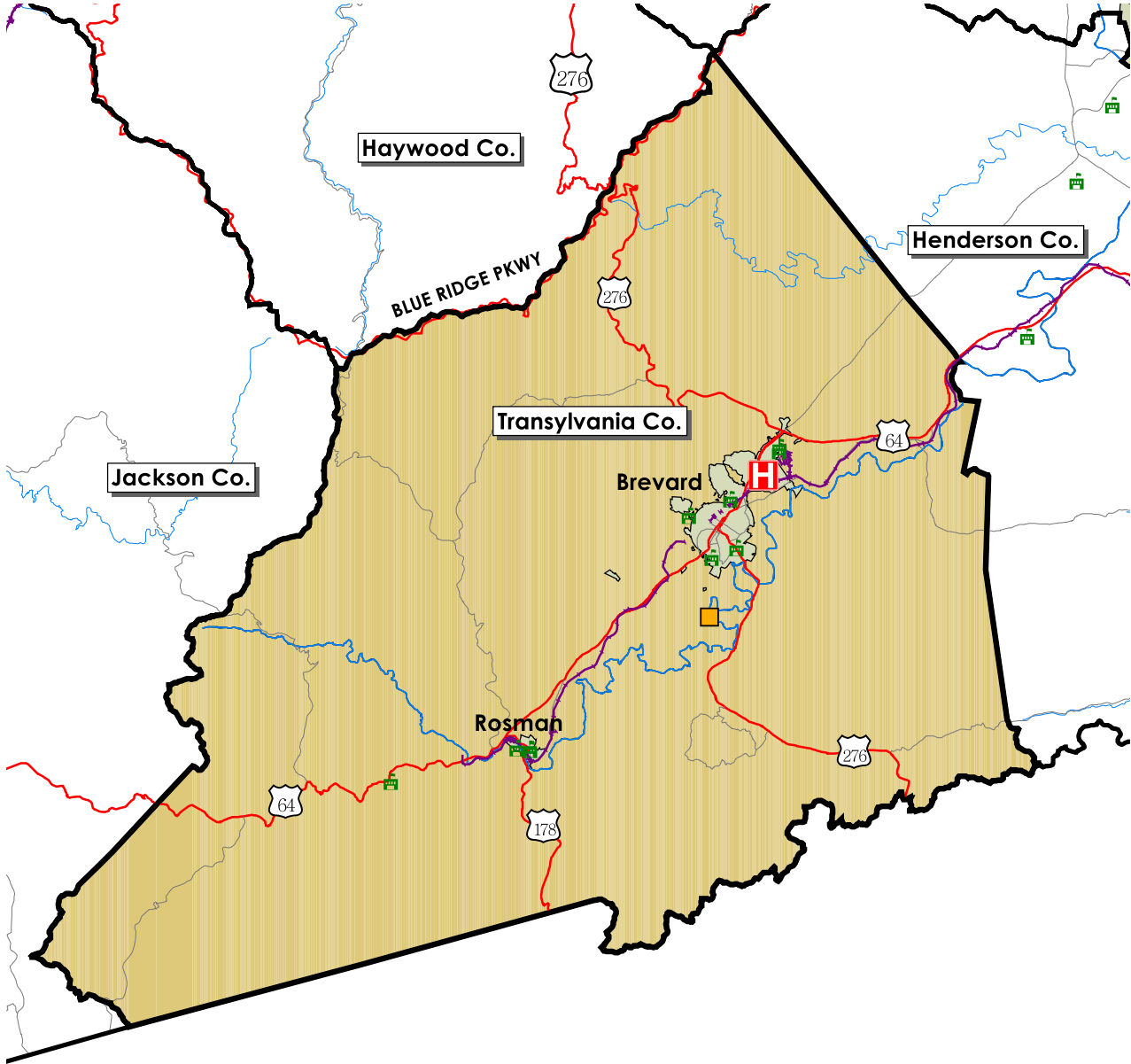
## Announced Closings & Layoffs

Number of affected establishments, 2006	0
Number of affected establishments, Thru June 2007	0
Job losses, 2006	0
Job losses, Thru June 2007	0

## Employment and Wages, by Sector (4th Quarter 2006)

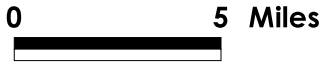
	Transylvania			North Carolina		
	Avg Emp	% Total	Avg Wkly Wage	Avg Emp	% Total	Avg Wkly Wage
Total All Industries	9,138	100.0	\$572	4,041,116	100.0	\$751
Total Government	1,458	16.0	\$671	683,775	16.9	\$765
Total Private Industry	7,680	84.0	\$553	3,357,340	83.1	\$748
Agriculture Forestry Fishing & Hunting	26	0.3	\$461	29,361	0.7	\$547
Mining	*	*	*	3,790	0.1	\$1,235
Utilities	*	*	*	14,297	0.4	\$1,237
Construction	809	8.9	\$626	248,353	6.0	\$801
Manufacturing	443	4.8	\$699	549,452	13.6	\$896
Wholesale Trade	340	3.7	\$1,057	178,275	4.4	\$1,096
Retail Trade	1,529	16.7	\$402	471,034	11.7	\$467
Transportation and Warehousing	152	1.7	\$743	139,956	3.5	\$763
Information	151	1.7	\$1,027	74,490	1.8	\$1,033
Finance and Insurance	216	2.4	\$786	153,315	3.8	\$1,264
Real Estate and Rental and Leasing	92	1.0	\$735	52,307	1.3	\$788
Professional and Technical Services	196	2.1	\$640	178,052	4.4	\$1,220
Management of Companies and Enterprises	*	*	*	67,717	1.7	\$1,401
Administrative and Waste Services	265	2.9	\$598	245,700	6.1	\$509
Educational Services	956	10.5	\$663	375,694	9.3	\$715
Health Care and Social Assistance	1,507	16.5	\$619	516,339	12.8	\$778
Arts, Entertainment and Recreation	165	1.8	\$489	50,971	1.3	\$633
Accommodation and Food Services	1,200	13.1	\$283	332,133	8.2	\$258
Other Services Ex. Public Admin	233	2.5	\$466	100,810	2.5	\$491
Public Administration	704	7.7	\$655	225,694	5.6	\$776
Unclassified	123	1.3	\$392	33,375	0.8	\$629

# Trends Profile Map Transylvania County



### Legend

-  Public Schools
-  Airports
-  Hospitals
-  Colleges and Universities
-  Community Colleges
-  Rail Lines
-  Interstate highways
-  US Highways
-  State and County Highways
-  Major Rivers and Streams
-  Major Waterbodies
-  Municipal Boundaries



Map prepared by the North Carolina Department of Commerce,  
Division of Policy, Research & Strategic Planning November 2003.

# Transylvania County

Employment Characteristics

Reporting Quarter: 2nd Quarter 2007

County Profile Contact (919) 715-6374

Economic Development Contact (919) 733-4977

Employment Security Commission (919) 733-2936

## Top Manufacturers (4th Quarter 2006)

M B INDUSTRIES INC  
VITALIE MANUFACTURING  
SMITH SYSTEMS INC  
RING INDUSTRIAL GROUP LP  
A G F A CORPROATION  
GENIE PRODUCTS ACQUISITION CORP  
KEIR MANUFACTURING INC  
ADP TOTALSOURCE II INC  
BRACKEN MOUNTAIN BAKERY  
PISGAH LABS

## Employment Range

100-249  
50-99  
Below 50  
Below 50  
Below 50  
Below 50  
Below 50  
Below 50  
Below 50  
Below 50



## Top Non-Manufacturing Employers (4th Quarter 2006)

TRANSYLVANIA COUNTY SCHOOLS  
TRANSYLVANIA COMMUNITY HOSPITAL INC  
WAL-MART ASSOCIATES INC  
TRANSYLVANIA COUNTY  
BREVARD COLLEGE CORP  
INGLES MARKETS INC  
TOWN OF BREVARD  
GOLDEN CORRAL  
IVY HILL HEALTH & RETIREMENT  
BRIAN CTR HEALTH & RETIREMENT

## Employment Range

500-999  
250-499  
250-499  
250-499  
100-249  
100-249  
100-249  
100-249  
100-249  
100-249

## Industry

Education and Health Services  
Education and Health Services  
Trade, Transportation, and Utilities  
Public Administration  
Education and Health Services  
Trade, Transportation, and Utilities  
Public Administration  
Leisure and Hospitality  
Education and Health Services  
Education and Health Services