

Buncombe County

Reporting Quarter: 4th Quarter 2007

County Profile Contact (919) 715-6374
Economic Development Contact (919) 733-4977

Demographics

Certified Population, July 2006	221,327	7
Population, 2000 Census	206,289	7
Population, 1990 Census	174,357	8
Percent population change, 1990-2000	18.3	40
Percent population change, NC, 1990-2000	21.3	

County Rank



Workforce & Education

Employment, Nov 2007	116,249	7
Unemployed, Nov 2007	4,162	10
Percent unemployed, Nov 2007	3.5	93
Percent unemployed, 2006	3.8	92
Percent unemployed, NC, Nov 2007	5.1	
Percent unemployed, NC, 2006	4.8	
Percent high school graduates or higher, 2000	81.9	17
Percent high school graduates or higher, NC, 2000	78.1	
Average SAT score (2400 scale), 2007	1,560	4
Average SAT score (2400 scale), NC, 2007	1,486	
Percent bachelor's degree or higher, 2000	25.3	15
Percent bachelor's degree or higher, NC, 2000	22.5	

Taxes, Sales & Services

Property taxes/\$100 Value ('07-'08)	\$0.5250
Taxable sales (Mil \$, Sept 07)	\$331.6
Taxable sales (Mil \$, FY 06-07)	\$3,336.2
Pharmacist/10,000 Pop, 2006	12
Physician/10,000 Pop, 2006	36
RN/10,000 Pop, 2006	166
Dentist/10,000 Pop, 2006	6
Tier designation, 2008	3
Partnership Region	Advantage West
Licensed Child Care Facilities, Sept 07	165
Child Care Slots, Sept 07	9,348

Income, Housing & Poverty

Average weekly wage per employee, 2nd Quarter 2007	\$646	19
Median household income, 2005	\$40,247	24
Per capita personal income, 2000	\$26,693	18
Per capita personal income, 2005	\$30,158	19
Per capita personal income, NC, 2006	\$32,234	
Median value of owner-occupied housing units, 2000	\$101,271	20
Median value of owner-occupied housing units, NC, 2000	\$108,300	
Percent in poverty, 2005	12.5	83
Percent in poverty, NC, 2005	14.9	

Notes: Data are the latest available at the date the profile was prepared. Demographics are from U.S. Census. Workforce & Education are from NC Employment Security Commission, U.S. Census, and NC Dept. of Public Instruction respectively; county unemployment rates are seasonally unadjusted. Average wage are from ESC's "Insured Employment and Wages in NC for Private Industry by Sector (2 digit)" which is based on the Current Population Survey." Income, Housing & Poverty are from U.S. Bureau of Economic Analysis and the U.S. Census, respectively. Jobs and Investments are from NC Dept. of Commerce. Closings & Layoffs by effective date are from the NC Employment Security Commission. Employment & Wages are from NCESC's "Insured Employment and Wages in NC for Industry by Sector (2 digit)" series; missing data or * indicates data not available or suppressed for confidentiality reasons. Taxes are from the NC Dept. of Revenue and prior to 7/05 represent gross sales but after are taxable sales. Medical data from the Cecil G. Sheps Center for Health Services Research, UNC-Chapel Hill. **County Ranking 1=highest.

Announced Jobs & Investments

Jobs announced, 2006	289
Jobs announced, Thru Oct 12, 2007	246
Total investment announced, 2006	\$31,400,000
Total investment announced, Thru Oct 12, 2007	\$23,000,000

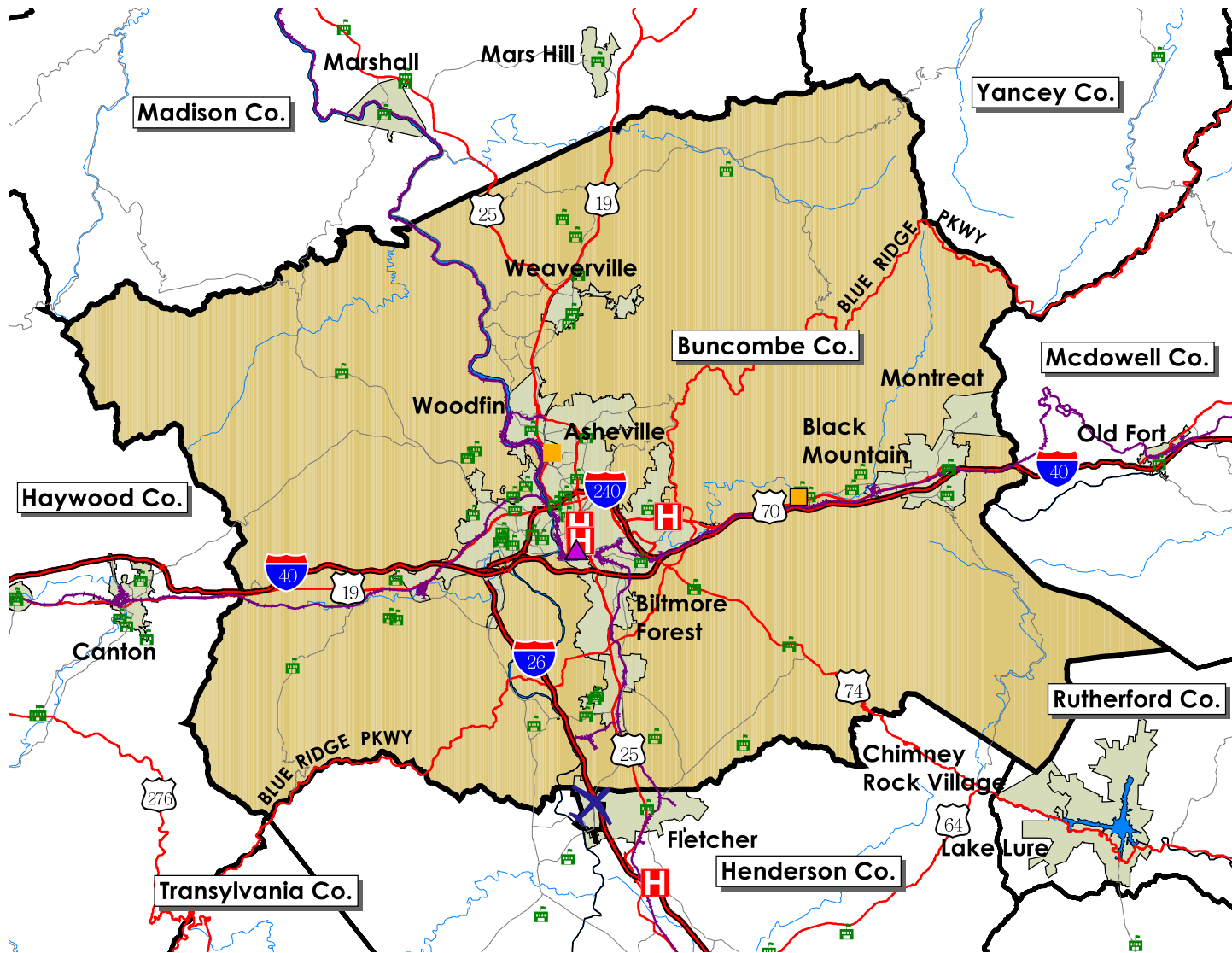
Announced Closings & Layoffs

Number of affected establishments, 2006	10
Number of affected establishments, Thru Dec 2007	13
Job losses, 2006	583
Job losses, Thru Dec 2007	343

Employment and Wages, by Sector (2nd Quarter 2007)

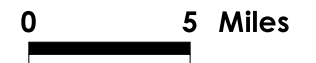
	Buncombe			North Carolina		
	Avg Emp	% Total	Avg Wkly Wage	Avg Emp	% Total	Avg Wkly Wage
Total All Industries	115,492	100.0	\$646	4,070,849	100.0	\$718
Total Government	15,680	13.6	\$772	678,349	16.7	\$754
Total Private Industry	99,812	86.4	\$626	3,392,501	83.3	\$711
Agriculture Forestry Fishing & Hunting	221	0.2	\$397	30,294	0.7	\$517
Mining	0	0.0	\$0	4,055	0.1	\$1,176
Utilities	311	0.3	\$1,434	13,939	0.3	\$1,378
Construction	7,085	6.1	\$704	255,709	6.0	\$729
Manufacturing	12,198	10.6	\$802	537,281	13.2	\$876
Wholesale Trade	3,744	3.2	\$767	182,823	4.5	\$1,021
Retail Trade	14,614	12.7	\$444	462,301	11.4	\$468
Transportation and Warehousing	3,197	2.8	\$654	115,772	2.8	\$721
Information	1,651	1.4	\$771	72,926	1.8	\$1,025
Finance and Insurance	2,745	2.4	\$1,017	152,965	3.8	\$1,183
Real Estate and Rental and Leasing	1,423	1.2	\$602	54,786	1.3	\$673
Professional and Technical Services	4,503	3.9	\$843	182,439	4.5	\$1,082
Management of Companies and Enterprises	712	0.6	\$1,076	69,658	1.7	\$1,374
Administrative and Waste Services	7,143	6.2	\$433	243,995	6.0	\$505
Educational Services	1,580	1.4	\$544	57,097	1.4	\$711
Health Care and Social Assistance	18,838	16.3	\$822	434,459	10.7	\$688
Arts, Entertainment and Recreation	2,185	1.9	\$420	53,965	1.3	\$551
Accommodation and Food Services	13,916	12.0	\$293	346,693	8.5	\$260
Other Services Ex. Public Admin	3,116	2.7	\$446	103,559	2.5	\$475
Public Administration				228,584	5.6	\$765
Unclassified	537	0.5	\$580	17,783	0.4	\$651

Trends Profile Map Buncombe County



Legend

- Public Schools
- Airports
- Hospitals
- Colleges and Universities
- Community Colleges
- Rail Lines
- Interstate highways
- US Highways
- State and County Highways
- Major Rivers and Streams
- Major Waterbodies
- Municipal Boundaries



Buncombe County

Employment Characteristics

Reporting Quarter: 4th Quarter 2007

County Profile Contact (919) 715-6374

Commerce Economic Development Contact (919) 733-4977

Employment Security Commission (919) 733-2936

Top Manufacturers (2nd Quarter 2007)

CUTLER HAMMER INC.	500-999
BORGWARNER TURBO SYSTEMS	500-999
SONOPRESS INC	500-999
VME AMERICAS INC	250-499
KENDRO LABORATORY PRODUCTS LP	250-499
SMITHS AEROSPACE COMPONENTS	250-499
DAY INTERNATIONAL INC	250-499
KEARFOTT GUIDANCE &	250-499
TYCO ELECTRONICS CORP	250-499
OWEN MANUFACTURING A DIV OF	250-499

Employment Range



Top Non-Manufacturing Employers (2nd Quarter 2007)

MEMORIAL MISSION HOSPITAL INC	1,000+
BUNCOMBE COUNTY BOARD OF EDUCATION	1,000+
STATE OF NORTH CAROLINA	1,000+
INGLES MARKETS INC	1,000+
COUNTY OF BUNCOMBE	1,000+
CITY OF ASHEVILLE	1,000+
VETERANS ADMINISTRATION HOSPITAL	1,000+
THE BILTMORE CO (A CORP)	1,000+
THE GROVE PARK INN RESORT & SPA	500-999
WAL-MART ASSOCIATES INC	500-999

Employment Range

Industry

Education and Health Services
Education and Health Services
Public Administration
Trade, Transportation, and Utilities
Public Administration
Public Administration
Education and Health Services
Leisure and Hospitality
Leisure and Hospitality
Trade, Transportation, and Utilities