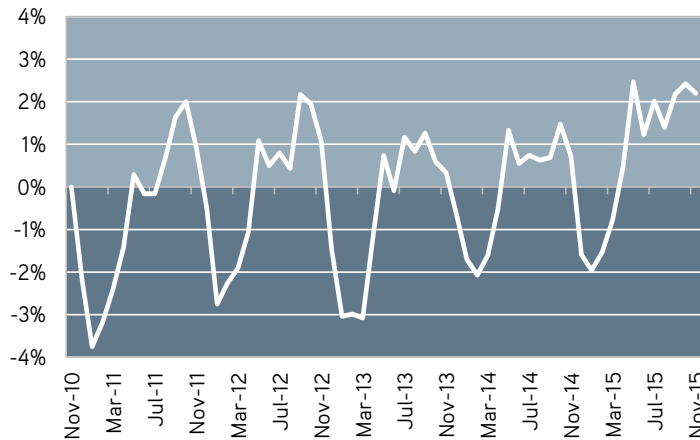


LABOR MARKET OVERVIEW

Regional Labor Market Snapshot

5-Year Percent Change in Employment*

High Country Region



Trending

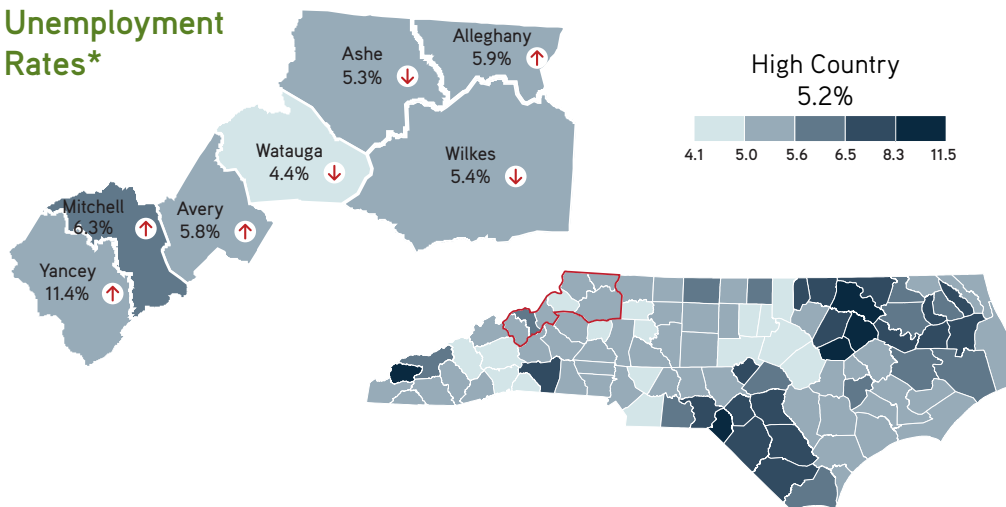
UNEMPLOYMENT*

November 2015

High Country Total = 5,007

	Current	Previous
Region	5.2%	5.2%
NC	5.5%	5.5%
US	4.8%	4.8%

November 2015 Unemployment Rates*



REGIONAL EMPLOYMENT*

High Country Total = 90,472

195 Fewer People Working in November than previous month

1,309 More People Working than same period one year ago

METRO JOB GROWTH*

Asheville Total = 184,500

600 More Jobs in November than previous month

Hickory-Lenoir-Morganton Total = 147,700

400 More Jobs in November than previous month

Who's Hiring

past 90 days from January 14, 2016

Appalachian Healthcare System	80
Lowe's	75
Appalachian State University	71
Watauga Medical Center	36
Tyson Foods	31
Pizza Hut	31
Medical Services Of America	29
Watauga County Schools	28

What Jobs

past 90 days from January 14, 2016

Heavy & Tractor-Trailer Truck Drivers	449
Registered Nurses	164
Occupational Therapists	77
Retail Salespersons	66
First-Line Supervisors, Retail Sales	65
First-Line Supervisors, Food Prep.	60
Physical Therapists	52
Customer Service Representatives	45

Source: The Conference Board Help Wanted Online

Source: The Conference Board Help Wanted Online

Note: All data produced in this publication are generated by LEAD unless otherwise stated.

*November 2015 data are preliminary, while other 2015 data are revised. All other reported data have undergone annual revision.

TAXABLE RETAIL SALES

High Country Total = \$179,450,430

2% Higher

than same period one year ago

Source: NC Dept. of Revenue
Note: October 2015 data most current available at time of release.

ONLINE JOB ADS

2,846 Online Advertised Vacancies over past 90 days

443 More Vacancies than same period one year ago

Source: The Conference Board Help Wanted Online

LABOR MARKET OVERVIEW

High Country Workforce Development Board

Civilian Labor Force Estimates*

		November 2015	October 2015	September 2015	November 2014
Alleghany	Labor Force	4,443	4,483	4,413	4,428
	Employed	4,181	4,229	4,170	4,166
	Unemployed	262	254	243	262
	Rate	5.9	5.7	5.5	5.9
Ashe	Labor Force	12,299	12,167	12,133	12,443
	Employed	11,642	11,504	11,464	11,746
	Unemployed	657	663	669	697
	Rate	5.3	5.4	5.5	5.6
Avery	Labor Force	7,393	7,631	7,590	7,512
	Employed	6,965	7,231	7,198	7,088
	Unemployed	428	400	392	424
	Rate	5.8	5.2	5.2	5.6
Mitchell	Labor Force	6,293	6,321	6,316	6,418
	Employed	5,898	5,928	5,921	6,016
	Unemployed	395	393	395	402
	Rate	6.3	6.2	6.3	6.3
Watauga	Labor Force	27,673	28,014	28,022	26,672
	Employed	26,446	26,721	26,824	25,494
	Unemployed	1,227	1,293	1,198	1,178
	Rate	4.4	4.6	4.3	4.4
Wilkes	Labor Force	30,113	29,763	29,535	29,272
	Employed	28,488	28,136	27,938	27,679
	Unemployed	1,625	1,627	1,597	1,593
	Rate	5.4	5.5	5.4	5.4
Yancey	Labor Force	14,530	14,620	14,662	14,760
	Employed	13,704	13,836	13,874	13,948
	Unemployed	826	784	788	812
	Rate	11.4	10.8	10.8	11.0

*November 2015 data are preliminary, while other 2015 data are revised. All other reported data have undergone annual revision.

This workforce product was funded by a grant awarded by the U.S. Department of Labor's Employment and Training Administration. The product was created by the recipient and does not necessarily reflect the official position of the U.S. Department of Labor. The Department of Labor makes no guarantees, warranties, or assurances of any kind, express or implied, with respect to such information, including any information on linked sites and including, but not limited to, accuracy of the information or its completeness, timeliness, usefulness, adequacy, continued availability, or ownership. This product is copyrighted by the institution that created it. Internal use by an organization and/or personal use by an individual for non-commercial purposes is permissible. All other uses require the prior authorization of the copyright owner.

View other products from  Labor & Economic Analysis
COMMERCE

