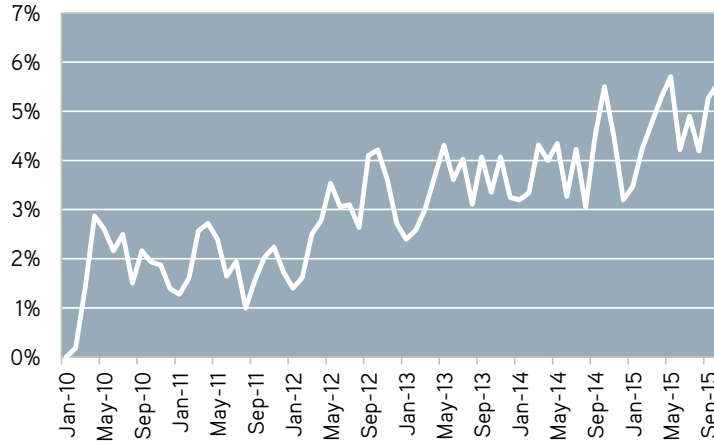


LABOR MARKET OVERVIEW

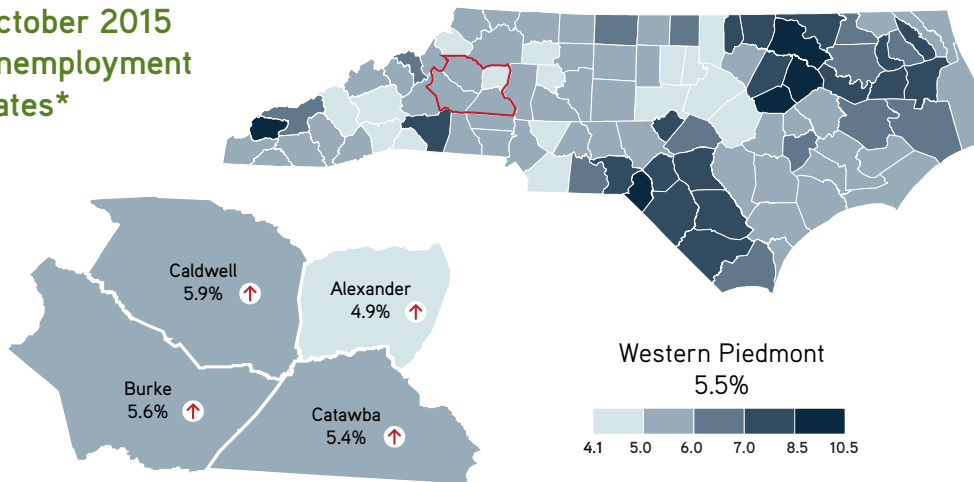
Regional Labor Market Snapshot

5-Year Percent Change in Employment*

Western Piedmont Region



October 2015 Unemployment Rates*



Trending

UNEMPLOYMENT*

October 2015

Western Total = 9,230



Western Piedmont 5.5%



North Carolina 5.5%



United States 4.8%

REGIONAL EMPLOYMENT*

Western Total = 158,181

436 More People Working
in October than previous month

89 More People Working
than same period one year ago

CLAIMS-TAKING ACTIVITY

Initial Claims Total = 608

13% Increase in Claims
in October over previous month

Benefits Paid Total = \$482,539

11% Decrease in Claims
in October over previous month

Duration of Claims Down 3% to 10.8
in October over previous month

INDIVIDUALS RECEIVING BENEFITS

Western Total = 629

5% Decrease in Claimants
in October over previous month

AVAILABLE JOBS

7,897 Jobs Posted Online
over past 90 days

453 More Job Openings
than same period one year ago

Employment & Wages by Supersector 2nd Quarter 2015

	Establishments	Avg. Employment	Avg. Weekly Wage
Natural Resources & Mining	65	475	\$582.03
Construction	686	3,385	\$689.11
Manufacturing	764	39,553	\$795.87
Trade, Transportation, & Utilities	2,027	28,552	\$690.65
Information	67	842	\$784.73
Financial Activities	719	3,138	\$781.81
Professional & Business Services	1,098	13,021	\$703.15
Education & Health Services	907	31,810	\$761.23
Leisure & Hospitality Services	712	12,906	\$267.45
Other Services	580	2,975	\$492.34
Public Administration	103	7,798	\$684.63

Note: All data produced in this publication are generated by LEAD unless otherwise stated.

*October 2015 data are preliminary, while other 2015 data are revised. All other reported data have undergone annual revision.

LABOR MARKET OVERVIEW

Western Piedmont Workforce Development Board

Civilian Labor Force Estimates*

		October 2015	September 2015	August 2015	October 2014
Alexander	Labor Force	17,330	17,208	17,129	17,316
	Employed	16,480	16,389	16,212	16,498
	Unemployed	850	819	917	818
	Rate	4.9	4.8	5.4	4.7
Burke	Labor Force	39,691	39,520	39,387	39,659
	Employed	37,467	37,356	36,974	37,453
	Unemployed	2,224	2,164	2,413	2,206
	Rate	5.6	5.5	6.1	5.6
Caldwell	Labor Force	35,588	35,464	35,394	35,697
	Employed	33,471	33,394	33,054	33,444
	Unemployed	2,117	2,070	2,340	2,253
	Rate	5.9	5.8	6.6	6.3
Catawba	Labor Force	74,802	74,566	74,368	74,798
	Employed	70,763	70,606	69,889	70,697
	Unemployed	4,039	3,960	4,479	4,101
	Rate	5.4	5.3	6.0	5.5

*October 2015 data are preliminary, while other 2015 data are revised. All other reported data have undergone annual revision.

Initial Claims

	October 2015	October 2014
Alexander	54	62
Burke	158	181
Caldwell	137	160
Catawba	259	313

Duration of Benefits

	October 2015	October 2014
Alexander	9.7	13.7
Burke	11.1	14.7
Caldwell	10.7	14.1
Catawba	10.9	14.8

Individuals Receiving Benefits

	October 2015	October 2014
Alexander	57	73
Burke	147	253
Caldwell	109	327
Catawba	316	506

Note: All data produced in this publication are generated by LEAD unless otherwise stated.