

LABOR MARKET OVERVIEW

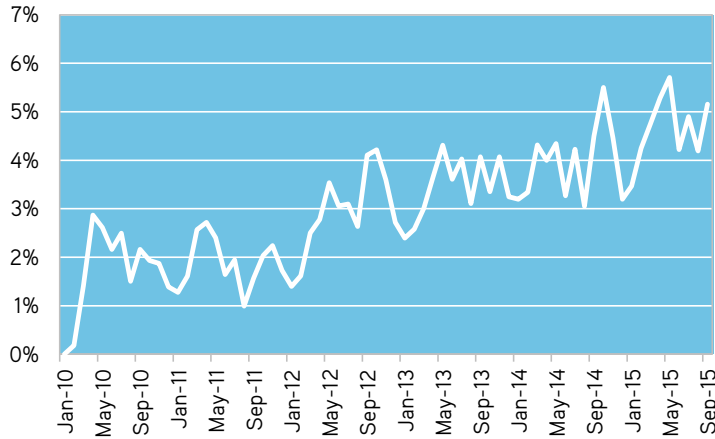


Western Piedmont Workforce Development Board

November 2015

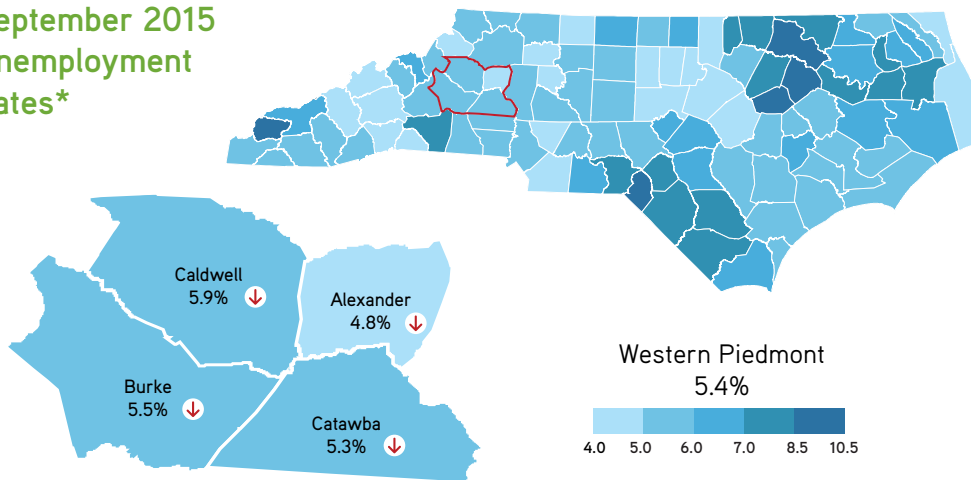
Regional Labor Market Snapshot

5-Year
Percent Change
in Employment*



Western
Piedmont
Region

September 2015
Unemployment
Rates*



Community Investment Report Top Announced Projects 2nd Quarter 2015

County	Company	Announced Jobs
Catawba	Blue Bloodhound, LP	191
Catawba	Wal-Mart Neighborhood Market	95
Catawba	Chick-fil-A	85
Burke	Duralee Fine Furniture	41
Catawba	Fourk Restaurant	40
Catawba	Carolina Nonwovens	35
Caldwell	Sealed Air Corporation	20
Caldwell	CentriLogic	18
Catawba	K & M Collision	10

Note: All data produced in this publication are generated by LEAD unless otherwise stated.

*September 2015 data are preliminary, while other 2015 data are revised. All other reported data have undergone annual revision.

Trending

UNEMPLOYMENT*

September 2015

Western Total = 9,051



Western Piedmont 5.4%



North Carolina 5.4%



United States 4.9%

REGIONAL EMPLOYMENT*

Western Total = 157,572

1,443 More People Working
in September than previous month

384 More People Working
than same period one year ago

CLAIMS-TAKING ACTIVITY

Initial Claims Total = 536

2% Increase in Claims
in September over previous month

Benefits Paid Total = \$544,270

18% Decrease in Claims
in September over previous month

Duration of Claims Down 3% to 11.1
in September over previous month

INDIVIDUALS RECEIVING BENEFITS

Western Total = 660

14% Decrease in Claimants
in September over previous month

AVAILABLE JOBS

7,752 Jobs Posted Online
over past 90 days

450 More Job Openings
than same period one year ago

Source: The Conference Board Help Wanted Online

Western Piedmont Workforce Development Board | 828.322.9191

NC Department of Commerce | Labor & Economic Analysis Division | 919.707.1500 | lead@nccommerce.com



LABOR MARKET OVERVIEW

Western Piedmont Workforce Development Board

Civilian Labor Force Estimates*

		September 2015	August 2015	July 2015	September 2014
Alexander	Labor Force	17,194	17,129	17,362	17,125
	Employed	16,371	16,212	16,393	16,251
	Unemployed	823	917	969	874
	Rate	4.8	5.4	5.6	5.1
Burke	Labor Force	39,488	39,387	39,776	39,352
	Employed	37,316	36,974	37,281	37,060
	Unemployed	2,172	2,413	2,495	2,292
	Rate	5.5	6.1	6.3	5.8
Caldwell	Labor Force	35,436	35,394	35,735	35,448
	Employed	33,357	33,054	33,293	33,137
	Unemployed	2,079	2,340	2,442	2,311
	Rate	5.9	6.6	6.8	6.5
Catawba	Labor Force	74,505	74,368	74,873	74,422
	Employed	70,528	69,889	70,221	70,143
	Unemployed	3,977	4,479	4,652	4,279
	Rate	5.3	6.0	6.2	5.7

*September 2015 data are preliminary, while other 2015 data are revised. All other reported data have undergone annual revision.

Initial Claims

	September 2015	September 2014
Alexander	44	52
Burke	116	173
Caldwell	131	237
Catawba	245	314

Duration of Benefits

	September 2015	September 2014
Alexander	10.2	13.9
Burke	11.3	15.2
Caldwell	10.7	14.9
Catawba	11.3	15.1

Individuals Receiving Benefits

	September 2015	September 2014
Alexander	57	105
Burke	140	265
Caldwell	123	338
Catawba	340	586

Note: All data produced in this publication are generated by LEAD unless otherwise stated.